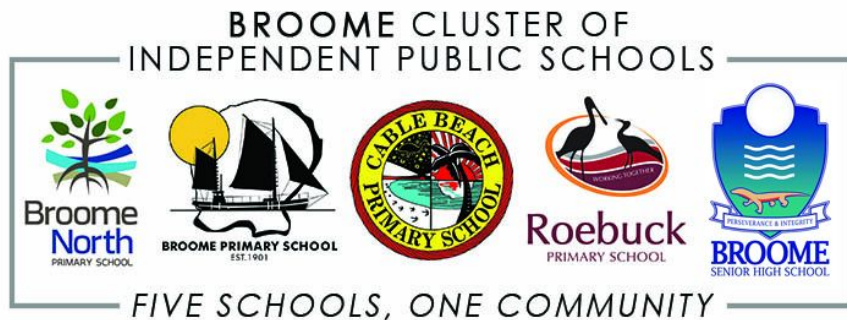




BROOME SENIOR HIGH SCHOOL

*INDEPENDENT PUBLIC SCHOOL
(BROOME CLUSTER)*

ANNUAL REPORT 2018



Contents

Overview	2
Year 12 2018	3
Business Plan Priorities	4
Priority: Academic Excellence	4
Year 7-10 Grade Distribution	4
NAPLAN/OLNA	4
WACE	5
Attainment	6
VET	6
Senior School Retention	7
Priority: Positive Culture of Success	8
Attendance	8
Primary to Secondary Retention	8
Information Technology:	9
A Connect School	9
Aboriginal Cultural Standards Framework	9
Health and Wellbeing	9
Financial Summary	10

Overview

Culture of Success

2018 has been yet another outstanding year for Broome SHS. Excellent academic achievements have been matched by improved attendance rates and strong commitment from students to their education. The community continues to be fully supportive of the school with over 85% of feeder primary Year 7's students enrolling at the high school for 2019.

We change lives, we build a community.

School Staff

The school's success is directly attributed to the dedication and commitment of staff. As a collective it is an outstanding group of people who work together tirelessly for the students. Individually the school has developed depth in all curriculum areas and the school is in a position to offer all major courses face to face at Y11/12 level.

Student Achievement

The achievements of Year 12s this year has been exceptional.

- ★ Number of students completed Y12: 88
- ★ Highest number of Indigenous graduates in the state: 26
- ★ Greatest improvement in Literacy and Numeracy from Year 9 NAPLAN to WACE achievement
- ★ Median ATAR of 61.3
- ★ 14% of ATAR students scored an ATAR over 90
- ★ Physical Education Studies and Maths Methods achieved exceptional performance status
- ★ English as an Additional Language or Dialect (EALD) achieved results top 15 in the state (inc private schools).
- ★ BSHS remains one of the top performing state schools in Western Australia.

Community Support

The school continues to have the strongest support from parents and the community. Retention from our cluster primary schools to Year 7 hit an all time high of 86% from 2018 - 2019. The school's P&C and School Board are both extremely active and well represented groups. The school is a key player in the community and a member of Broome's Chamber of Commerce and Industry. We have strong partnerships with TAFE, the Shire, key Aboriginal groups and a host of private industry partners. Our newsletter is widely distributed, to all parents, primary schools and parents, and all industry partners.

Independent Public School Status

Our partnership with our primary schools (Broome, Broome North, Cable Beach and Roebuck) as the Broome Cluster of Independent Schools continues to thrive. Both the School Board and Cluster Board in their governance role have overseen school and Cluster progress. Success has been measured against our School and Cluster Plans. We welcome three new principals to the cluster in 2018. The target of 80% retention of Year 6s to Year 7 was achieved again in 2019. The primary schools are to be acknowledged for their strong support of the high school.

Mathew Burt

Principal
Broome Senior High School

Year 12 2018

Broome Senior High School achieved median ATAR of 61.3 with it's 2018. This coming after setting a record median ATAR of 80.05 in 2017, the highest Broome Senior High School has ever achieved. The 2018 cohort fell within one standard deviation of it's expected performance.

Median ATAR			
Year	2018	2017	2016
Broome Senior High School	61.3	80.05	73.08
Expected performance	-0.51	1.86	0.83
Like Schools	64.03	64.5	63.88
Public Schools	79.5	78.45	78.2

We celebrated some very high performances with 14% of the cohort achieving a 90+ ATAR, although the performance of the ATAR cohort as a whole was not as good as previous years.


ATAR Performance			
Year	2018	2017	2016
90-98.95	4 (14%)	4 (10%)	4 (11%)
80-89.95	3 (11%)	17 (40%)	11 (31%)
70-79.95	3 (11%)	9 (21%)	6 (17%)
55-69.95	8 (29%)	6 (14%)	5 (14%)
<55	9 (32%)	5 (12%)	10 (28%)

Overall VET performance was outstanding with Broome Senior High School achieving its first VET Exhibition award to go with a Certificate of Excellence, a Certificate of Distinction and 7 Certificates of Merit.

2018 Year 12 Exhibitions and Awards	
Certificate of Distinction	1
Certificate of Merit	4


Business Plan Priorities

Priority: Academic Excellence

Target Area	2018 Progress
Year 7-10 Grade Distribution	

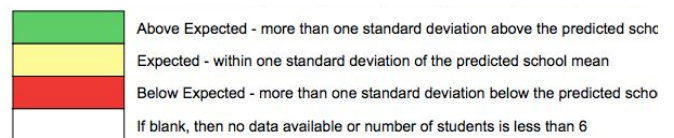
Semester reviews of grade allocation for each learning area reveal that as a whole Broome Senior High School is consistent with the trend of like schools.

In depth analysis and review in each Learning Area contributes to the ongoing improvement in the delivery of the Western Australian Curriculum, moderation and the assessment structures.

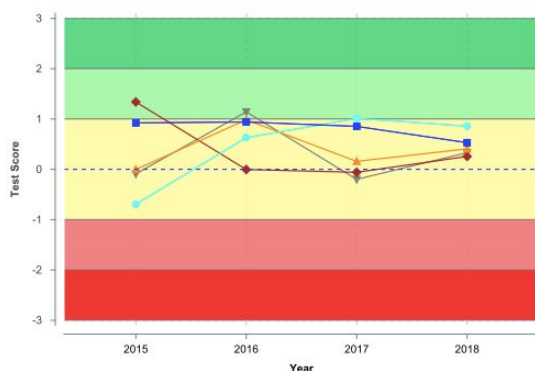
Target Area	2018 Progress
NAPLAN/OLNA	

NAPLAN results for Year 7 have tended to stay steady with the exception of a significant improvement in reading. The Year 9 has shown steady improvement in reading, writing and numeracy and is attributed to the value adding as a result of implementing targeted literacy and numeracy strategies.

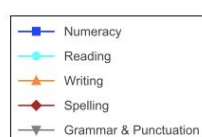
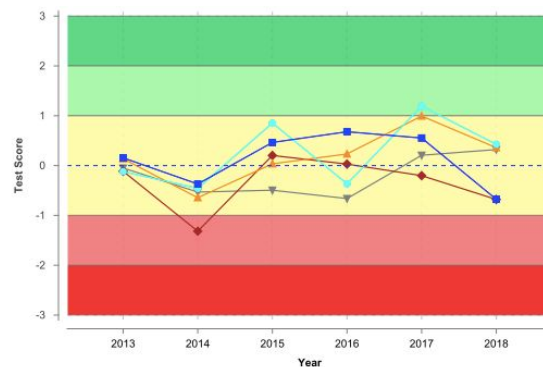
	Year 7			Year 9		
	2016	2017	2018	2016	2017	2018
Numeracy	0.9	0.9	0.5	0.7	0.6	-0.7
Reading	0.6	1.0	0.9	-0.4	1.2	0.4
Writing	1.0	0.2	0.4	0.2	1.0	0.4
Spelling	-0.0	-0.1	0.3	0.0	-0.2	-0.7
Grammar & Punctuation	1.1	-0.2	0.3	-0.7	0.2	0.3



Year 7



Year 9

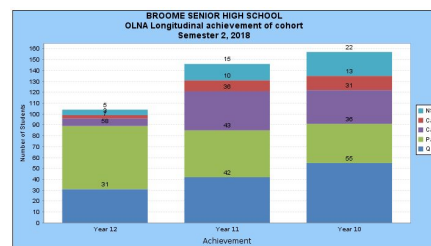
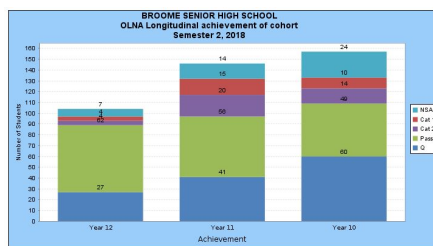
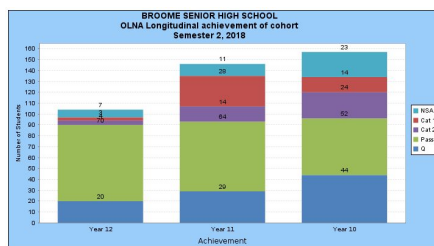


OLNA success and achievement improved significantly due the implementation of strong intervention strategies. Broome Senior High School can report the best improvement for a school in the state from Year 9 NAPLAN literacy and numeracy results to Year 12 literacy and numeracy achievement. This is an outstanding achievement that has resulted in high graduation success.

Reading

Writing

Numeracy



Target Area	2018 Progress
WACE	


WACE achievement in 2019 hit the Business Plan targets for the first time in three years. The biggest contributing factor being the focus on Literacy and Numeracy achievement and strong numbers of students meeting the Certificate II requirement.

WACE Achievement Rate (% of eligible students)

Year	2018	2017	2016	2015	2014
Broome SHS (WACE eligible)	75 (87%)	76 (78%)	64 (77%)	86 (92%)	45 (96%)
Like Schools (%)	81%	80%	81%	94%	96%
Public Schools (%)	89%	88%	90%	96%	97%


WACE: Achievement Standard - units include equivalents

Year	2018	2017	2016
C Grade Requirement Met WACE Eligible	77 (90%)	88 (91%)	79 (95%)
English Complete WACE Eligible	86 (100%)	97 (100%)	83 (100%)
ATAR Or Cert II Requirement Met WACE Eligible	82 (95%)	87 (90%)	83 (100%)

Target Area	2018 Progress
Attainment	

An improved attainment rate in 2018 was attributed to a more strategic approach to getting student through their certificate courses. The moving VET landscape will continue provide challenges for the school moving forward. A number of students on alternative pathways have studied a Certificate I and therefore the data does not present as well as it could.

Attainment Rate – ATAR >= 55 and/or Cert II or higher: count (%)			
Year	2018	2017	2016
School (WACE eligible)	81 (94%)	87 (90%)	82 (99%)
Like schools	94%	94%	96%
Public schools	96%	96%	98%


Target Area	2018 Progress
VET	

All senior school student at Broome Senior High School have the opportunity to participate in VET courses. Within the Year 12 cohort, 73% of students successfully completed a certificate course. The diversity of achievement from Certificate III through to Certificate I is shown in the table below.

These are outstanding results achieved by the students in an excellent VET program at Broome Senior High School.

VET Participation Rate (count; enrolled in VET as %)			
Year	2018	2017	2016
School VET enrolments	110 (80%)	128 (82%)	122
Funded VET students	82%	78%	77%

Level of highest qualification achieved (VET)			
	2018	2017	2016
Certificate IV		1 (1%)	
Certificate III	25 (23%)	23 (18%)	18 (15%)
Certificate II	49 (45%)	47 (37%)	56 (46%)
Certificate I	6 (5%)	13 (10%)	6 (5%)

<i>Target Area</i>	<i>2018 Progress</i>
Senior School Retention	

Senior school retention continues to be strong at Broome Senior High School due to broad and diverse offerings of ATAR, General and Certificate courses.

Number of Students Eligible for WACE (% of year group)							
Year	2018	2017	2016	2015	2014	2013	2012
Year 12 Cohort	86 (62%)	97 (62%)	83	93	47	75	70

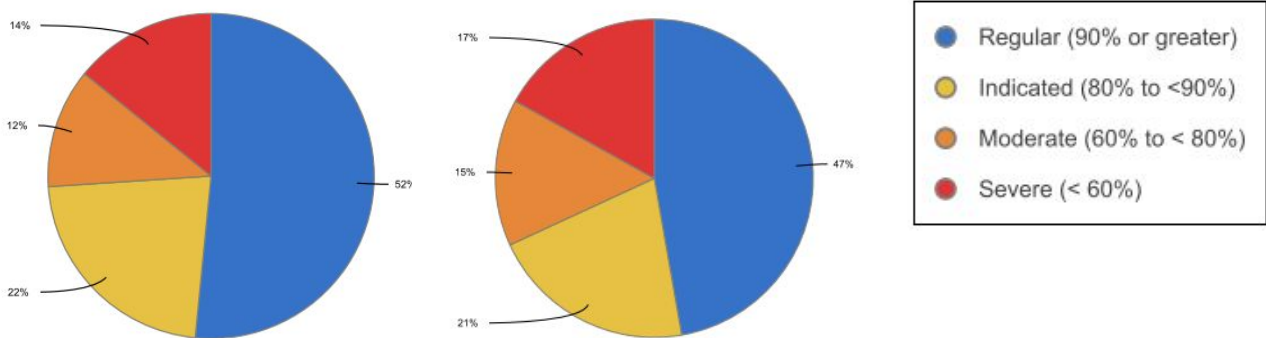
Priority: Positive Culture of Success

Target Area	2018 Progress
Attendance	


Attendance was a growing concern in 2018 as Broome Senior High School failed to meet its targets set in the Business Plan. Strategies have been put in place with new systems and structures for 2019.

Semester 1 2017 attendance

Semester 1 2018 attendance



	Non-Aboriginal	Aboriginal	Total
2018	89.4%	66.9%	80.6%
2017	90.4%	72.1%	83.3%
2016	89.9%	75.7%	84.5%
2015	90.8%	73.5%	84.3%

Target Area	2018 Progress
Primary to Secondary Retention	

A credit to the Broome Cluster of schools and the confidence in public education that the Broome community has, retention from primary to secondary continues to meet or exceed goals set in the Business Plan and the goals of the Cluster.

Broome Cluster Primary Schools to Broome Senior High School Retention			
Year	2018 - 19	2017- 18	2016 - 17
% Retention	86%	80%	83%

Target Area	2018 Progress
Information Technology: A Connect School	

The current business plan target is to progress to have a whole school adoption of the Connect online learning platform by the end of 2018. Although plans are in place to achieve this goal it did not come to fruition in 2018. The challenge for Broome Senior High School is to introduce the school community to Connect (school space) and channel communication through this platform, including school the distribution of school reports.




Target Area	2018 Progress
Aboriginal Cultural Standards Framework	

The Broome SHS Aboriginal Education Team has led whole school processes to examine the school's self-assessment against the 5 Cultural Standards. Utilising detailed feedback from all staff via Learning Area surveys and whole staff PD sessions, the Aboriginal Education Team have formulated a whole school plan for the following action areas.

- Relationships
- Teaching

The 2019 priority action areas are:

- Leadership
- Learning Environment

Target Area	2018 Progress
Health and Wellbeing	

Staff Wellbeing is underpinned by the BSHS Wellbeing model. Merging elements from Kaya and Seligman's PERMA, the BSHS Wellbeing model addresses the key components instrumental to ensuring a flourishing staff characterised by Sustained Vitality.

This plan addresses Staff Wellbeing under each of the 7 key components of the BSHS Wellbeing model:

- Sustained Vitality
- Noble Purpose/Meaning
- Optimal Performance/Accomplishment
- Positive Emotions
- Quality Relationships
- Regular Absorption/ Engagement
- Mindful Awareness

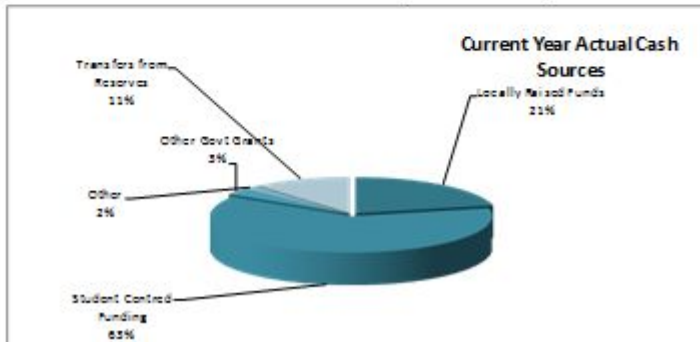
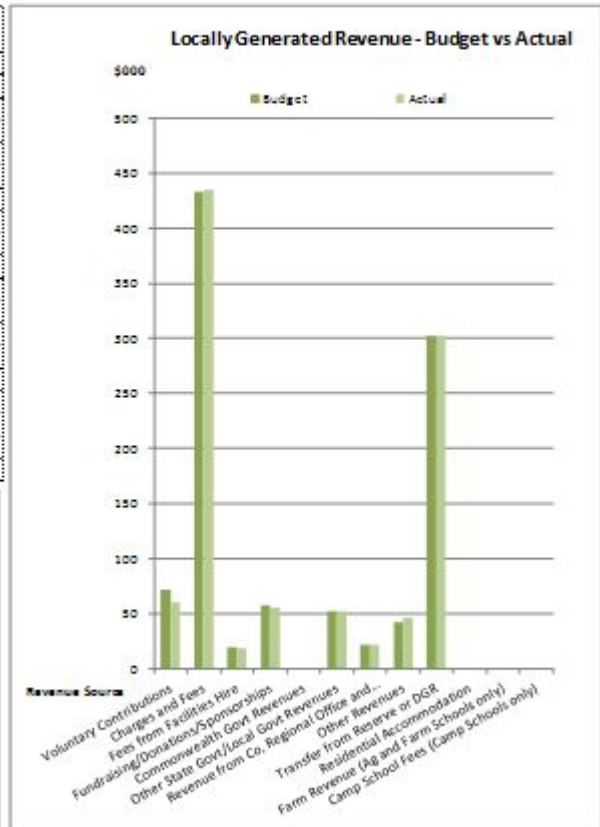




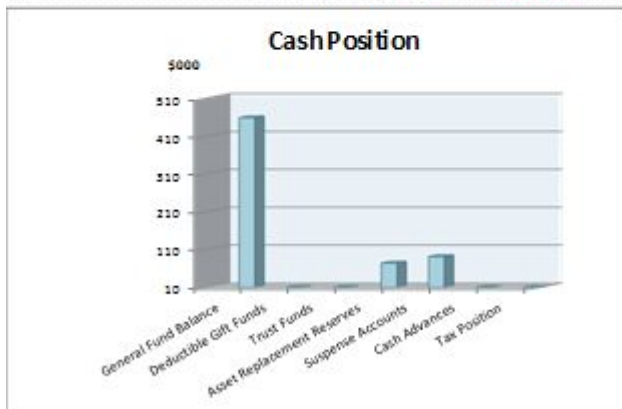
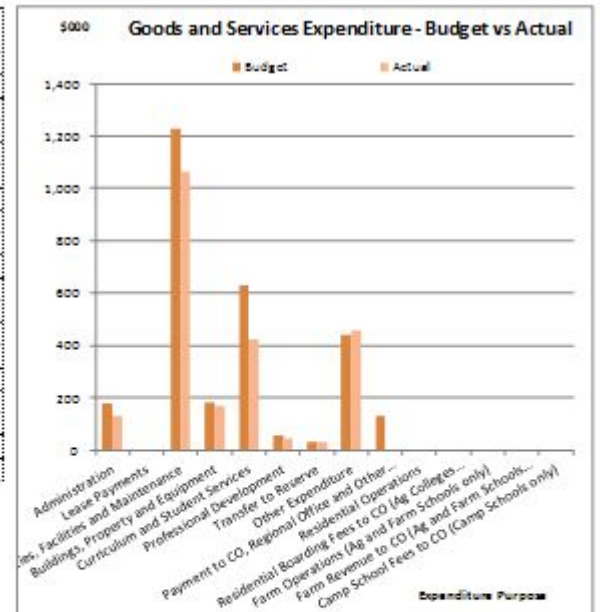
BROOME SENIOR HIGH SCHOOL

Financial Summary as at
31 December 2018

Revenue - Cash & Salary Allocation	Budget	Actual
1. Voluntary Contributions	\$ 72,086.00	\$ 60,768.12
2. Charges and Fees	\$ 438,011.95	\$ 434,634.34
3. Fees from Facilities Hire	\$ 20,000.00	\$ 18,389.18
4. Fundraising/Donations/Sponsorships	\$ 37,630.00	\$ 35,616.07
5. Commonwealth Govt Revenues	\$ -	\$ -
6. Other State Govt/Local Govt Revenues	\$ 52,328.00	\$ 52,328.41
7. Revenue from Co, Regional Office and Other Schools	\$ 21,570.00	\$ 21,570.10
8. Other Revenues	\$ 42,013.00	\$ 46,553.90
9. Transfer from Reserve or DGR	\$ 302,000.00	\$ 302,000.00
10. Residential Accommodation	\$ -	\$ -
11. Farm Revenue (Ag and Farm Schools only)	\$ -	\$ -
12. Camp School Fees (Camp Schools only)	\$ -	\$ -
Total Locally Raised Funds	\$ 1,000,950.95	\$ 992,138.12
Opening Balance	\$ 118,378.00	\$ 118,378.48
Student Centred Funding	\$ 1,660,630.00	\$ 1,660,965.40
Total Cash Funds Available	\$ 2,779,978.95	\$ 2,771,503.00
Total Salary Allocation	\$ -	\$ -
Total Funds Available	\$ 2,779,978.95	\$ 2,771,503.00



Expenditure - Cash and Salary	Budget	Actual
1. Administration	\$ 176,668.34	\$ 128,671.94
2. Lease Payments	\$ -	\$ -
3. Utilities, Facilities and Maintenance	\$ 1,227,218.85	\$ 1,066,101.44
4. Buildings, Property and Equipment	\$ 176,219.36	\$ 187,483.56
5. Curriculum and Student Services	\$ 628,442.48	\$ 423,530.65
6. Professional Development	\$ 37,575.80	\$ 41,440.07
7. Transfer to Reserve	\$ 30,700.00	\$ 30,700.00
8. Other Expenditure	\$ 426,428.74	\$ 454,970.24
9. Payment to CO, Regional Office and Other Schools	\$ 126,166.00	\$ -
10. Residential Operations	\$ -	\$ -
11. Residential Boarding Fees to CO (Ag Colleges only)	\$ -	\$ -
12. Farm Operations (Ag and Farm Schools only)	\$ -	\$ -
13. Farm Revenue to CO (Ag and Farm Schools only)	\$ -	\$ -
14. Camp School Fees to CO (Camp Schools only)	\$ -	\$ -
Total Goods and Services Expenditure	\$ 2,867,424.78	\$ 2,313,897.90
Total Forecast Salary Expenditure	\$ -	\$ -
Total Expenditure	\$ 2,867,424.78	\$ 2,313,897.90
Cash Budget Variance	\$ 514,554.08	\$ 457,605.10



Cash Position as at:	
Bank Balance	\$ 599,399.65
Made up of:	\$ -
1. General Fund Balance	\$ 457,605.10
2. Deductible Gift Funds	\$ -
3. Trust Funds	\$ -
4. Asset Replacement Reserves	\$ 74,295.31
5. Suspense Accounts	\$ 61,489.24
6. Cash Advances	\$ 500.00
7. Tax Position	\$ 23,440.00
Total Bank Balance	\$ 599,399.65